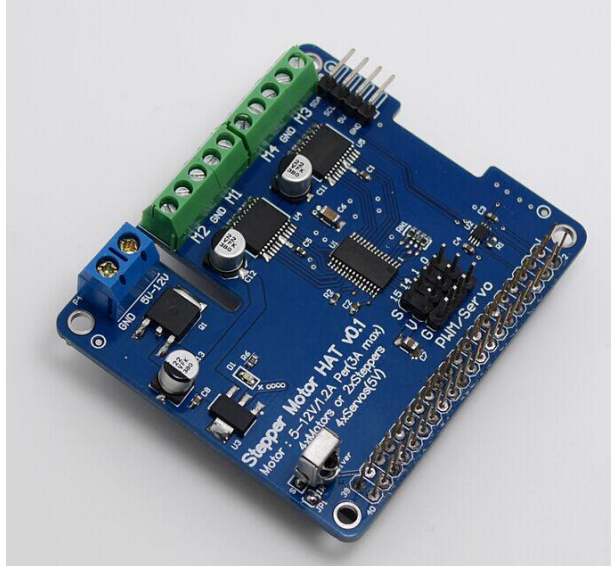


# Stepper Motor HAT for Raspberry Pi

Stepper Motor/ Motor/ Servo



## Function:

- **4 H-Bridges:** provides **1.2A per bridge** (3A peak) with thermal shutdown protection, internal kickback protection diodes. Can run motors on 5VDC to 12VDC.
- **Up to 4 bi-directional DC** motors with individual 8-bit speed selection (so, about 0.5% resolution)
- **Up to 2 stepper motors** (unipolar or bipolar) with single coil, double coil, interleaved or micro-stepping.
- **Up to 4 Channel 12-bit PWM/Servo**(5V)
- **One Infrared Receiver**(GPIO26)
- Big terminal block connectors to easily hook up wires (18-26AWG) and power
- Polarity protected 2-pin terminal block and jumper to connect external 5-12VDC power
- Works best with Raspberry Pi model A+, B+, or Pi 2;

